



**REDWOOD
ACADEMY**



SCHOOL **PROSPECTUS**



admissions@redwoodacademy.co.za
www.redwoodacademy.co.za



011 852 4744



20 TOPAAS STREET
EXTENSION 7
LENASIA



**REDWOOD
ACADEMY**

FOUNDATION PHASE

GRADES R TO RR

OUR METHODOLOGY

The Redwood Academy pre-school program is designed to make sure that learners are ready for mainstream school. We believe that children learn most from experiences in which they are directly involved. Our curriculum is delivered through a variety of core experiences and daily discovery where we incorporate learning through play using hands-on activities.

We offer a dynamic, multi-cultural environment where educators know each child and your child will never be lost in a large school environment and never fall between the cracks.



Redwood Academy campus is nestled in the heart of Lenasia in a safe and convenient area.

The classrooms, studios, laboratories and centers all form part of our school's beautiful architecture which incorporates the necessary sporting facilities.

The pre-school play area includes spacious and secure play areas with jungle gyms.



EXTRA-CURRICULAR ACTIVITIES

These extra-curricular activities will be provided free to all learners:

- Coding and computer literacy for young learners.
- Robotics using the Marty system.
- Swimming classes (to commence once the indoor pool is ready).
- Soccer - Wolves
- Netball

Other extra-curriculars will be offered based on demand. Examples include:

- Arts and Crafts
- Cubs Cricket
- Kids Aroma Therapy
- Li'l Einsteins Science and Tech
- Playball Kinesthetics
- Logischool Coding
- DWAF Tennis
- Cubs Cricket

TECHNOLOGY & CODING

Teachers use projectors and smart boards or interactive screens for class lessons.

Coding classes using the code.org platform are offered to learners. Learners must bring along an iPad or Tablet PC (such as Samsung Galaxy) for these activities.

Learners follow an excellent Robotics program called Marty. Virtual Reality (VR) Goggles are used to enhance the learning process. We also focus on general Computer Literacy.

SCHOOL TIMES

- **Monday to Thursday:** 8:30am – 12:30pm
- **Friday:** 8:30am – 11:30am

FEE STRUCTURE FOR 2026

- **Monthly fee:** R 2 800 per month payable over 12 months.
- **Registration fee:** New Applicants - R 2 600 Current learners - R 1 900
- **After Care:** R 900 per month - Payable over 11 months.
After care is available Monday - Friday until 17:00.



@redwoodlenasia

ESTABLISHED 2015

REDWOOD ACADEMY

LENASIA CAMPUS | GRADES RR - 12

WHY REDWOOD ?

NURTURING LEARNING ENVIRONMENT

Our learners look forward to attending school, where attaining an education can also be enjoyable.

DYNAMIC TEAM

The school educators and staff are dedicated to helping our learners achieve and exceed their individual goals.

TECHNOLOGY ENABLED LEARNING

Traditional learning is enhanced with selective use of the latest technology to keep learners engaged.

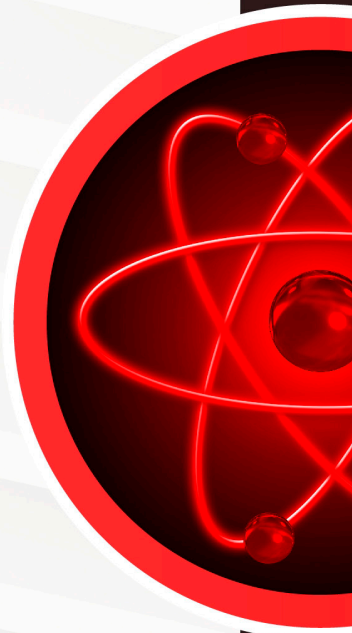
EMBRACING INDIVIDUALITY

We acknowledge and encourage the unique attributes of each learner within a diverse environment.

COGITATIO
ET
HONEREM

RESPECT
YOUR MIND,
HONOUR
YOUR HEART

THOUGHT
&
HONOUR



STEPS TO **APPLY:**



STEP 1

Visit our Applications Portal at:

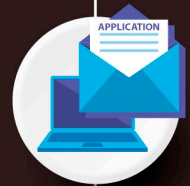
<https://redwoodlenasia.d6plus.co.za/register/>
OR

Visit www.redwoodacademy.co.za, choose a campus and click on Apply Now.



STEP 2

Fill out the application form online as completely and accurately as possible



STEP 3

Upload the required documents for the learner and parents viz:

- IDs
- Birth certificate
- Latest Term 2/4 report card
- Etc.



STEP 4

If your application is successful, a confirmation email will be sent to you with a contract, agreement, declaration and an indemnity. Please complete and return the signed contracts to admissions@redwoodacademy.co.za to complete the enrolment process.



WELCOME TO OUR REDWOOD FAMILY!

Learn to love school !!

“ GROWING IS FOREVER... ”
share your journey with us



**REDWOOD
ACADEMY**

THE REDWOOD TREE

*My father once told me a story about an old Redwood tree –
How she stood tall and proud –
Her sprawling limbs clothed in emerald green.*

*With a smile,
he described how she was a mere sapling -
sheltered by her family and basking
in the safety of the warm, dappled light.*

*But as this tree grew taller,
She found herself at the mercy of the cruel wind and the vicious rain.
Together, they tore relentlessly at her pretty boughs,
Until she felt as though her heart would splinter.*

*After a long, thoughtful pause, my father turned to me and said:
“One day, the same may happen to you, and when that day comes –
remember the Redwood tree.*

*Do not worry about the cold wind and the vicious rain –
do as that tree did and just keep growing”*



@redwoodlenasia



011 852 4744