

# SCHOOL PROSPECTUS



# REDWOOD ACADEMY



ormonde@redwoodacademy.co.za  
www.redwoodacademy.co.za



31 Modulus Road  
Ormonde



010 023 6117



# WHY REDWOOD ?

## NURTURING LEARNING ENVIRONMENT

Our learners look forward to attending school, where attaining an education can also be enjoyable.

## DYNAMIC TEAM

The school educators and staff are dedicated to helping our learners achieve and exceed their individual goals.

## TECHNOLOGY ENABLED LEARNING

Traditional learning is enhanced with selective use of the latest technology to keep learners engaged.

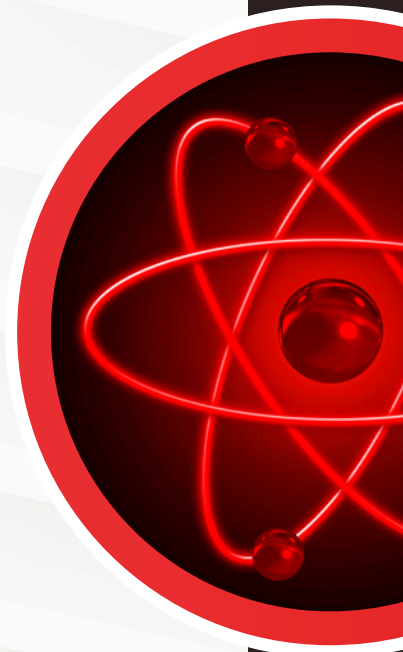
## EMBRACING INDIVIDUALITY

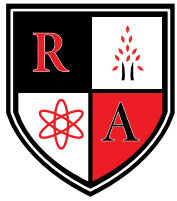
We acknowledge and encourage the unique attributes of each learner within a diverse environment.

COGITATIO  
ET  
HONEREM

RESPECT  
YOUR MIND,  
HONOUR  
YOUR HEART

THOUGHT  
&  
HONOUR





**REDWOOD  
ACADEMY**

# FOUNDATION PHASE

**GRADES R TO RR**

## OUR METHODOLOGY

The Redwood Academy pre-school program is designed to make sure that learners are ready for mainstream school. We believe that children learn most from experiences in which they are directly involved. Our curriculum is delivered through a variety of core experiences and daily discovery where we incorporate learning through play using hands-on activities.

We offer a dynamic, multi-cultural environment where educators know each child and your child will never be lost in a large school environment and never fall between the cracks.

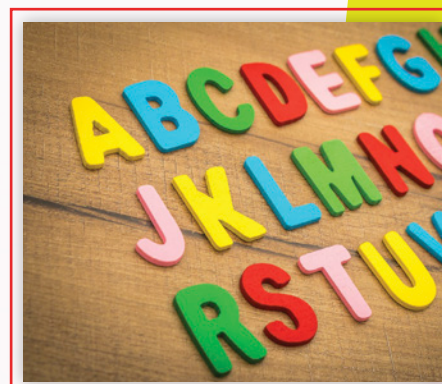


## REDWOOD ACADEMY

Redwood Academy campus is nestled in the heart of Ormonde.

The classrooms, studios, laboratories and centers all form part of our school's beautiful architecture which incorporates the necessary sporting facilities.

The pre-school play area includes spacious and secure play areas with jungle gyms.



## EXTRA-CURRICULAR ACTIVITIES

Extra-curricular include:

- Coding for young learners.
- Aila Stretch and Restore (Similar to Yoga)
- Tennis, Soccer and Chess

## SCHOOL TIMES

- **Monday to Thursday:** 8:30am – 1:00pm
- **Friday:** 8:30am – 11:30am

## FEE STRUCTURE FOR 2024

- **Monthly fee:** R 2450 per month payable over 12 months.
- **Registration fee:** R 2200 is payable on registration.
- **After-care:** R 700 per month payable over 12 months.

## DOCUMENTATION NEEDED TO APPLY

- Visit our Applications Portal at:  
<https://redwoodormonde.d6plus.co.za/register/>
- For more information contact: [ormonde@redwoodacademy.co.za](mailto:ormonde@redwoodacademy.co.za).



# STEPS TO APPLY:



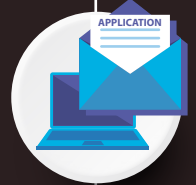
## STEP 1

Visit our Applications Portal at:  
<https://redwoodormonde.d6plus.co.za/register/>



## STEP 2

Fill out the application form online as completely and accurately as possible



## STEP 3

Upload the required documents for the learner and parents viz:

- IDs
- Birth certificate
- Latest Term 2/4 report card
- Etc



## STEP 4

If your application is successful, a confirmation email will be sent to you with a contract, agreement, declaration and an indemnity. Please complete and return the signed contracts to [ormonde@redwoodacademy.co.za](mailto:ormonde@redwoodacademy.co.za) to complete the enrolment process.



**WELCOME TO OUR REDWOOD FAMILY!**

*Learn to love school !!*

**“GROWING IS FOREVER...  
*share your journey with us*”**



## The Redwood Tree

My father once told me a story about an old Redwood tree –  
How she stood tall and proud –

Her sprawling limbs clothed in emerald green.

With a smile,

he described how she was a mere sapling –  
sheltered by her family and basking  
in the safety of the warm, dappled light.

But as this tree grew taller,

She found herself at the mercy of the cruel wind and the vicious rain.

Together, they tore relentlessly at her pretty boughs.

Until she felt as though her heart would splinter.

After a long, thoughtful pause, my father turned to me and said:

“One day, the same may happen to you, and when that day comes –  
remember the Redwood tree.

Do not worry about the cold wind and the vicious rain –  
do as that tree did and just keep growing”

- - Lang Leav (adapted)

